

Ethernet Temperature & Humidity Data Logger



Specifications

Alarm Type: High/Low, Low Battery, Calibration Due, Lost Communication

Ambient Operating RH Conditions : 0-95% RH non-condensing

Ambient Operating Temperature Conditions: -22 to 122F (-30 to 50C)

Approvals: RoHS, CE

Battery Backup: 4 AA Batteries

Battery Life (Avg): 1 Month/Back-up Only (at 2 Minute Sample Rate in Moderate Conditions). Logger will save logged data, but will not send data when running on battery power only.

Cable Details: For Setup Only: USB - Male Series A plug to 5 pin Male Series B mini plug (6 ft).; Standard Ethernet (7 ft)

Calibration Options: N100 , N300, N400, & N520

Channels: CH1: Temperature, CH2: Humidity

Data Capacity: 32,000 (16,000 per channel)

Dimensions: 1.7 x 4.25 x 4.25in

Download Type: Ethernet

Enclosure: Black; ABS Plastic Clam Shell

Humidity Accuracy: +/-2% RH from 0 to 60%; +/-3% RH from 60 to 95%

Humidity Range: 0-95% RH non-condensing

Humidity Sensor Type: Digital RH Sensor

IP Rating: 21

Included Accessories: USB Cable, AC Adapter, 4 AA Batteries, Quick Start Guide

Mounting Options: Free Standing or Wall Mount (With Keyhole)

Network Requirements: If Host PC and Logger are on separate subnets, both Logger and Host PC subnets must be able to see each other. For best results, assign a fixed IP Address to the Host PC. If preferred, logger can be setup using DHCP (contact Dickson Technical Support for

Note on Alarm Type: All alarm conditions will generate a pop-up notification in the Dickson WIZARD Software. Text/Email notification available with use of WIZARD SECURE Software.

Notes: The WH645 Logger reads temperature and humidity and sends data back to the Receiver at regular intervals.

PC Requirements: Minimum of 2 GB RAM; Windows XP (with service pack 3) and Windows 7; 2 available USB ports

Power Cord: 6 ft

Power Source: 120 to 240 VAC, 12 VDC (INTL fittings available)

Power Source Input: AC 100-240 0.5V 60/50 Hz

Power Source Output: DC 9V, 1A

Power Status Indicator: Red/Green/Blue (RGB) LED

Remote Probe Dimensions : Houses thermistor and RH sensor in polycarbonate plastic; 1.5" x 0.5" (1.25cm x 4.5cm)

Remote Sensor Length: 10 ft (optional)

Remote Sensor Type: 1 Field Replaceable Digital Temperature/RH Sensor

Response Time: 30 Seconds to 63% of Full Scale

Sample Interval: User Selectable (from 10 seconds to 1 hour in 10 second intervals)

Software Options: W2 Version 1.2.0.11 or higher

Storage Conditions: -22 to 158F (-30 to 70C)

Storage Conditions RH: 0-95% RH non-condensing

Temperature Accuracy: +/-0.8F from 20 to 122F 1.8F Remaining (+/-0.44C from -7 to 50C 1C Remaining)

Temperature Range: -22 to 185F (-28 to 85C)

Temperature Sensor Type: Field Replaceable

Unit Weight: 3 lbs

Units/Pkg: 1

Calibrations

N100 1-Point NIST Traceable Calibration

N300 3-Point NIST Traceable Calibration

N400 3-Point Ultima NIST A2LA Accredited Calibration

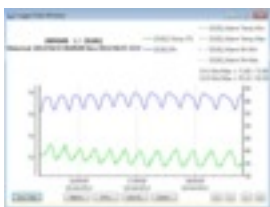
Accessories



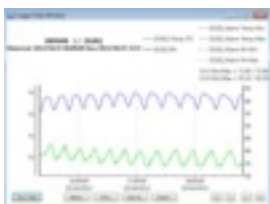
R200 - Replaceable Temperature/Humidity Sensor
Angled Temperature/Humidity Replaceable Sensor



A895 - Probe Extension Cable
10' Extension Probe for Pre-Calibrated Sensor



SW501 - WiZARD2 Wireless Software with Email and Text Alerts
WiZARD2 Wireless Software with Email and Text Alerts (Software Only)



SW502 - WiZARD2 Wireless 21CFR11 Secure Software
WiZARD2 Wireless 21CFR11 Secure Software (Software Only)



N530 - Wireless Wizard2 IQOQ Validation Package
Wireless Wizard2 IQOQ Validation Package

Accessories

R157 - AC Adapter
AC Adapter



A868 - Sensor Dust Filter
Sensor Dust Filter - prolong the life of your sensor.

