

Ethernet Temperature Data Logger



Specifications

Alarm Type: High/Low, Low Battery, Calibration Due, Lost Communication
Ambient Operating RH Conditions : 0-95% RH non-condensing (Logger only)
Ambient Operating Temperature Conditions: -22 to 122F (-30 to 50C)
Approvals: RoHS, FCC Part 15 Compliance, CE
Battery Backup: 4 AA Batteries
Battery Life (Avg): 6 Months (at 2 Minute Sample Rate in Moderate Conditions)
Cable Details: USB - Male Series A plug to 5 pin Male Series B mini plug.
Cable Length: 6ft
Calibration Options: N100 , N300, N400, & N520
Channels: CH1: Temperature
Data Capacity: 32,000 (16,000 per channel)
Dimensions: 1.7 x 4.25 x 4.25in
Download Type: Ethernet
Enclosure: Black; ABS Plastic Clam Shell
IP Rating: 21
Included Accessories: USB Cable, AC Adapter, 4 AA Batteries, Quick Start Guide
Mounting Options: Free Standing or Wall Mount (With Keyhole)
Network Requirements: If Host PC and Logger are on separate subnets, both Logger and Host PC subnets must be able to see each other. For best results, assign a fixed IP Address to the Host PC. If preferred, logger can be setup using DHCP (contact Dickson Technical Support for
Note on Alarm Type: All alarm conditions will generate a pop-up notification in the Dickson WIZARD Software. Text/Email notification available with use of WIZARD SECURE Software.
Notes: The WT640 Logger reads temperature and sends data back to the Receiver at regular intervals.
PC Requirements: Minimum of 2 GB RAM; Windows XP (with service pack 3) and Windows 7; 2 available USB ports
Power Cord: 6 ft
Power Source: 120 to 240 VAC, 12 VDC (INTL fittings available)
Power Source Input: AC 100-240 0.5V 60/50 Hz
Power Source Output: DC 9V, 1A
Power Status Indicator: Red/Green/Blue (RGB) LED
Remote Sensor Length: 4
Remote Sensor Type: 1 K T/C with Mini Connector
Response Time: 30 Seconds to 63% of Full Scale
Sample Interval: User Selectable (from 10 seconds to 1 hour in 10 second intervals)
Software Options: W2 Version 1.2.0.11 or higher
Storage Conditions: -22 to 158F (-30 to 70C)
Storage Conditions RH: 0-95% RH non-condensing
Temperature Accuracy: +/-1.8F from -22 to 122F 3.8F Remaining (+/-1C from -30 to 50C 2.1C Remaining)
Temperature Range: -300 to 2000F (-184 to 1093C)
Temperature Sensor Type: Digital Temperature Sensor
Unit Weight: 3 lbs

Units/Pkg: 1

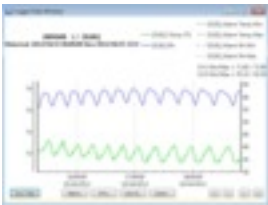
Calibrations

N100 1-Point NIST Traceable Calibration

N300 3-Point NIST Traceable Calibration

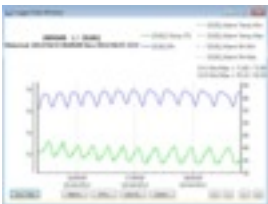
N400 3-Point Ultima NIST A2LA Accredited Calibration

Accessories



SW501 - WIZARD2 Wireless Software with Email and Text Alerts

WIZARD2 Wireless Software with Email and Text Alerts (Software Only)



SW502 - WIZARD2 Wireless 21CFR11 Secure Software

WIZARD2 Wireless 21CFR11 Secure Software (Software Only)



N530 - Wireless Wizard2 IQOQ Validation Package

Wireless Wizard2 IQOQ Validation Package



N520 - Certificate of Validation

Certificate of Validation



A340 - Glass Beads Bottle

Bottle of Glass Bead Solution - Dampen Temperature Swings.

Accessories



A203 - Temperature Probe
6" (15cm) High Temperature Immersion Probe



D611 - Shielded Immersion Probe
15' (4.5m) Shielded Thermocouple with 4" (10cm) stainless steel tip



D605 - Piercing Probe
4" (10cm) Thermocouple Handled Piercing Probe



D617 - Probe Extension
K-Thermocouple 10' (3m) Extension Cable



R013 - Temperature Probe
Replacement Bead Wire Temperature Probe



R157 - AC Adapter
AC Adapter

Accessories



R065 - Universal Plug Kit for AC Adapter
Set of Three International Power Plugs for AC Adapter